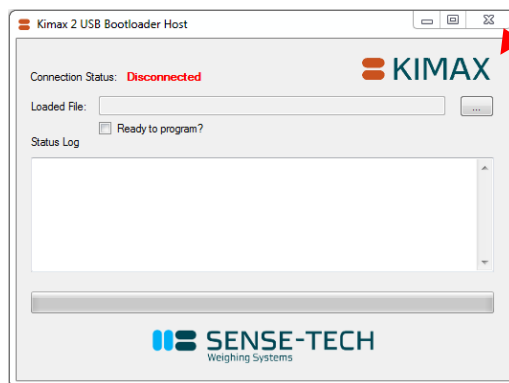


In this guide, the software version 9.00, is used as an example. Choose the appropriate software in the given situation.

Uploading the Kimax 2 version

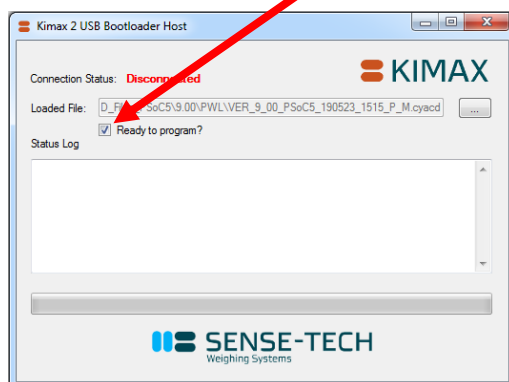
Open the "Kimax 2 USB Bootloader Host"

Choose the CYACD- file, that is to be uploaded to the Kimax 2 instrument. (Click the button)



In this example, the file 'VER_9_00_PSoC5_190523_1515_P_M.cyacd' is chosen.

When ready to program, put a checkmark in the "Ready to program?" checkbox.



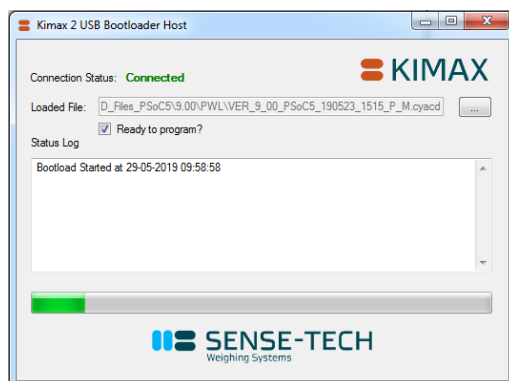
Make sure the Kimax 2 instrument is **disconnected** from any power supply.

Connect the mini USB plug into the Kimax 2 instrument and the regular USB plug into the computer.

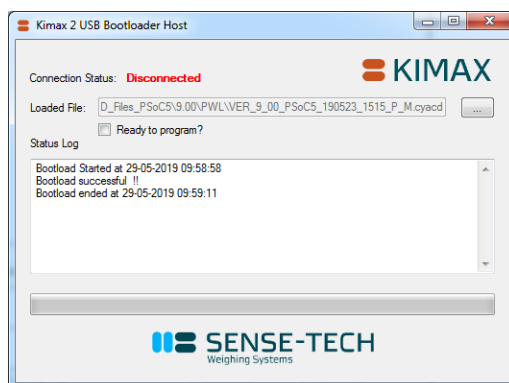


Dato for ændring: 29. Maj 2019	Seneste ændring: Adapted to autoversion with checkbox ready to program.	Ændret af: RF	Dokumentnavn (pdf): MANU_90018	Rev.nr.: 002
Dato for oprettelse: 01. Sep. 2015	Emne: Kimax 2 Bootloader Host	Materiale:		
Oprettet af: Ruben Friberg	Vores varenr:	Dimension:		
Dato for godkendelse: 29. Maj 2019	 Bygade 43 A – DK 7173 Vonge – T: +45 7670 3001 – F: +45 7670 3002 E: mail@sense-tech.com – www.sense-tech.com		Målestok:	Tolerance:
Godkendt af: TN			Side x af x:	1 af 2

Once the connection between the computer and the Kimax 2 instrument is established, the Connection Status in the Bootloader Host is changed from "**Disconnected**" to "**Connected**". The program will now be uploaded to the Kimax 2 instrument. The programming can be monitored by looking at the status bar at the bottom of the Bootloader Host.




Once the programming is done, the Status Log of the Bootloader Host should contain a message stating that the programming was done successfully, like shown below. The "Ready to program?" checkbox is automatically un-checked.



When the programming is successful, disconnect the USB cable. Connect the Kimax 2 instrument to a power supply (10 – 30 V DC). Verify that the Kimax 2 instrument is showing the wanted version, when starting up.

Note: If the programming is unsuccessful, disconnect the USB cable. Check the "Ready to program?" checkbox and then reconnect the USB cable. The program will now be uploaded to the Kimax 2 instrument.

Dato for ændring: 29. Maj 2019	Seneste ændring: Adapted to autoversion with checkbox ready to program.	Ændret af: RF	Dokumentnavn (pdf): MANU_90018	Rev.nr.: 002
Dato for oprettelse: 01. Sep. 2015	Emne: Kimax 2 Bootloader Host	Materiale:		
Oprettet af: Ruben Friberg	Vores varenr:	Dimension:		
Dato for godkendelse: 29. Maj 2019	 Bygade 43 A – DK 7173 Vonge – T: +45 7670 3001 – F: +45 7670 3002 E: mail@sense-tech.com – www.sense-tech.com		Målestok:	Tolerance:
Godkendt af: TN			Side x af x:	2 af 2